



# COMPANY PROFILE

---

## COMPANY BACKGROUND

Mona Holdings (Pty) Ltd is an organization that offers multi-disciplinary services to client across various industries including construction, Engineering, Procurement, property development, education and health sector.



**Mona Holdings (Pty)  
Ltd provides services  
that are tailor made to  
suit project's needs.  
Said services are driven  
by expertise and  
underpinned by our  
experience in delivering  
project within budget,  
time and to the  
required quality.**

## ■ ABOUT US

**Mona Holdings (Pty) Ltd** is an organization that offers multi-disciplinary services to clients across various industries including construction, Engineering, Procurement, property development, education and health sector.

Our philosophy is to provide a holistic approach in managing and delivering projects by providing an “End to End” solution and services to ensure that the value chain is optimised and project success is achieved.

Driven by excellence and the desire to achieve customer satisfaction, Mona Holdings (Pty) Ltd take cognisance and adhere to all regulations and required standards in delivering its services whilst maintaining highest level of professionalism without compromise of its service quality.

## ■ MISSION

Our mission is to render excellent services to all our customers and clients to ensure that their expectations are met and their satisfaction is achieved at all time.

## ■ VISION

Our vision is to become the best organization that offers services and solutions to clients that are cost effective, innovative and quality guaranteed.

## ■ VALUES

QUALITY

SERVICE EXCELLENCE

SAFETY & WELLBEING

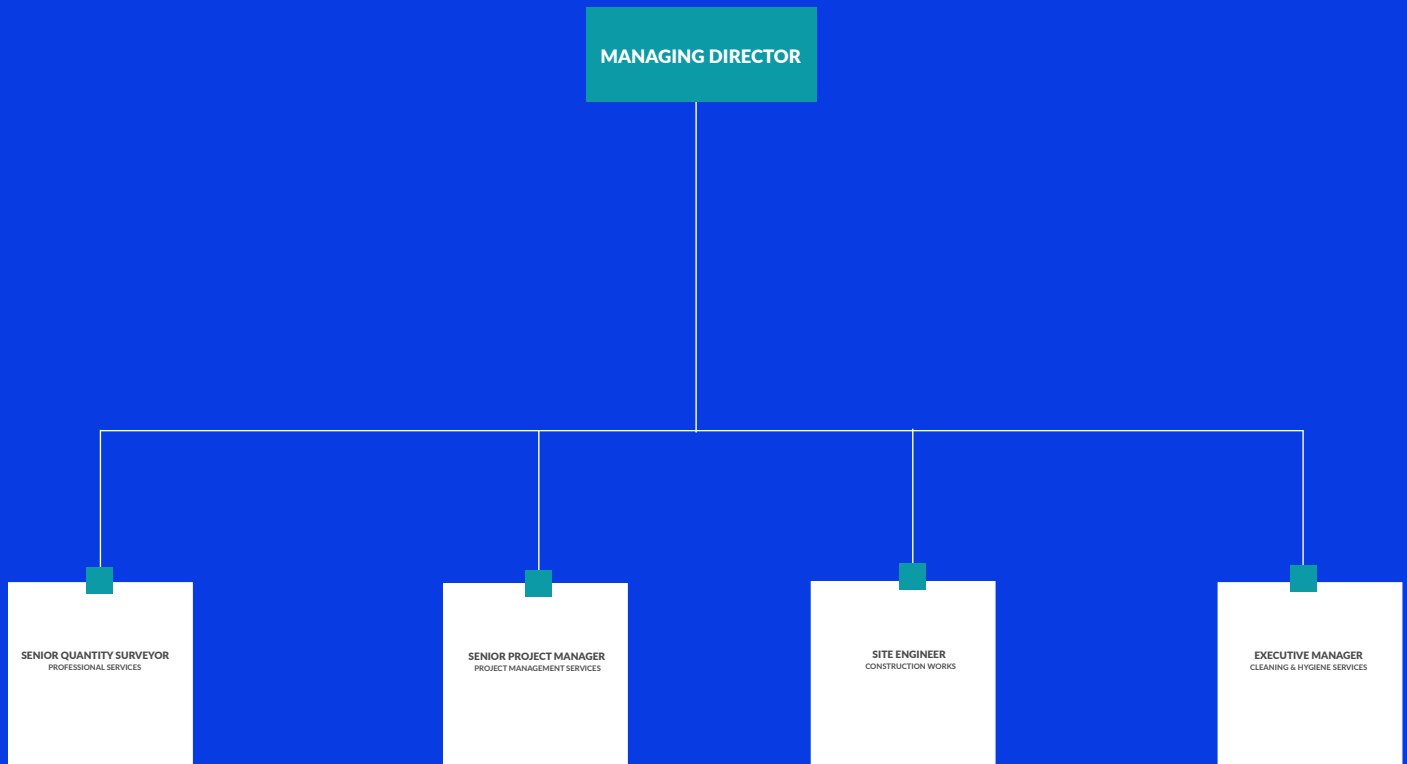
INTEGRITY

TEAMWORK

CUSTOMER CENTRIC



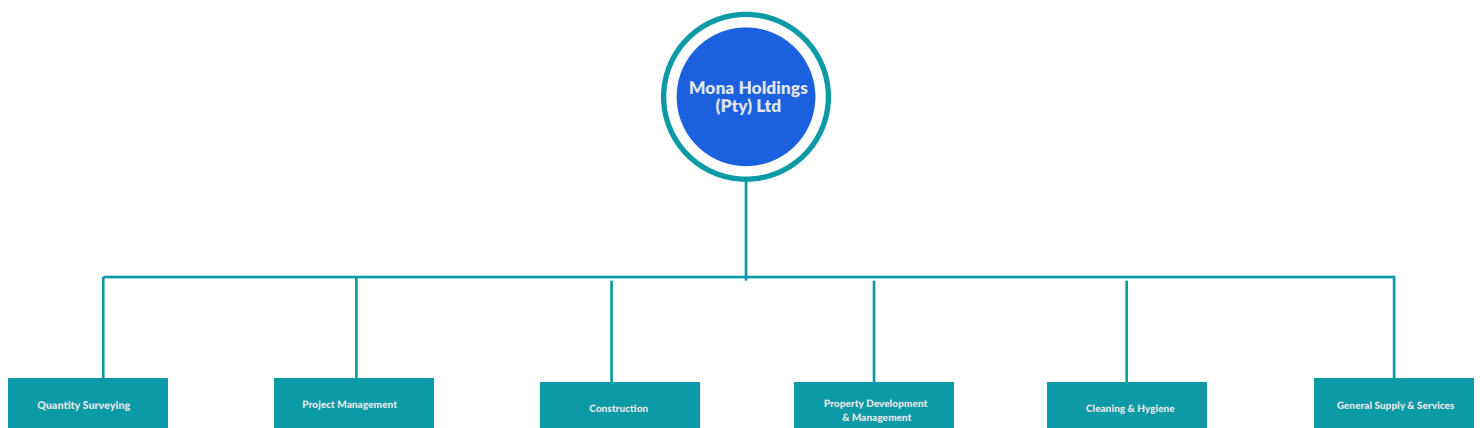
# ORGANOGRAM



Mona Holdings (Pty) Ltd is equipped with qualified personnel, which are equipped with the relevant experience, qualifications and expertise in executing projects. Our project delivery process is client-centric which enhances engagement with client at all process stage to ensure client participation and collaboration.



# ■ EXPERTISE AND SERVICES



## ■ QUANTITY SURVEYING SERVICES

The following Quantity surveying services are offered by **Monaholdings Pty Ltd**. These services includes:

- Cost estimates and Cost Plans
- Feasibility studies
- Preparation of life cycle costs and cash flows
- Preparation of cost plans
- Value engineering
- Preparation of bills of quantities
- Preparation of tendering and contract documents
- Pricing of bill of quantities and advice on rates
- Analysis of tenders, adjudication and writing of tender reports
- Preparation of contract documentation
- Re-measurement of work on site
- Preparation of periodic valuations
- Evaluation of variations and adjudication of claims
- Calculations and preparation of cost escalations
- Preparation of financial appraisals reports and cost forecasts
- Preparation of final accounts
- Dispute resolution

## ■ PROJECT MANAGEMENT SERVICES

Project management is one of the key services offered by Monaholdings Pty Ltd. These services includes:

- Liaison with client to develop a project brief
- Development of strategic plan for the project
- Develop feasibility studies and other studies such as Environmental Impact Assessment (EIA)







- Selection of consultants suitable for the project and developing/negotiating their terms and conditions of engagement
- Appointment of contractors and subcontractors, including the giving of advice on the most suitable forms of procurement including tendering procedures and contracts
- Management of design phase; coordinate and control all activities such as approvals, designs, legislation, documentation, tendering to time and cost targets.
- Advise of the application and use of new project management concepts to benefit project process, such as constructability, value engineering, partnering and green architecture.
- Setting up management and administrative structure, to include;

- o Duties and responsibilities, and lines of reporting
- o Procedures for clear and efficient communication

- Advise on variations and claims
- Project commissioning

- o Complete all the necessary documentation and post commissioning activities



## ■ CONSTRUCTION

Our construction services, skills and knowledge across all areas of building construction are at times integrated with our Project Management services in accordance to clients requirements or executed independently.

We aim to be a forward thinking when it comes to construction and collaborate with partners and communities to create life enhancing solutions. We manage each project from initial concept to completion using our full range of collaborative, value- added services. These includes:

- Road Construction & Maintenance
- General building
- Brickwork
  - Plastering
  - Paint Works
  - Tilling
  - Carpentry
  - Plumbing
  - Ceiling (etc)
- Renovations & Alterations
- Road Markings & Maintenance
- Roofing
- Electrical Works (etc)





## ■ PROPERTY DEVELOPMENT & MANAGEMENT

We buy , improve , sell buildings and land and arrange new buildings to be built. Our Company has expanded into residential and commercial property management and management , through concept , design , and development of properties and facility management services post construction.



## ■ CLEANING & HYGIENE SERVICES

We provide cleaning solutions for the construction, corporate, education, healthcare, retail, tourism and leisure sectors.

We believe that a clean environment promotes employees wellbeing, health and has a positive impact on positive performance and productivity.

Our cleaning solutions are tailored to suits clients needs and schedules especially in the corporate environment in minimizing disruption and to ensure that production is maintained. These includes:

- Sparkle (handover) cleaning
- Post refurbishment cleaning
- Site cleaning





- Builders cleaning
- General facilities cleaning
- Spot cleaning
- Vacuuming carpets
- Car park cleaning
- Cleaning cafeterias, staff offices, work stations and kitchens

## ■ GENERAL SUPPLY & SERVICES

We supply quality essential products to our customers. These include the following:

- **Covid -19 PPE**
  - o Mask
  - o Sanitizers
  - o Sterilized Reinforced Surgical gowns
  - o Shoe Boot Covers
  - o Disposable Coveralls ( etc )
- **Construction and Mining PPE**
  - o Re-usable Coveralls
  - o Face shields
  - o Helmets
  - o Reflective Vest
  - o Boots (etc)
- **Office Requirements**
  - o Movable and non-movable desk shields
  - o Isolation Booths
  - o Office Furniture
  - o Stationery
  - o Offices Interior Design
  - o Printers
  - o Laptops
  - o Office Computers (etc)







## ■ OUR VALUE OF PROPORTION

**Mona Holdings Pty Ltd value proposition to its clients is derived from the following:**

- Delivering work of the highest quality - Our contractors are meticulous and take pride in what they do. As a result, **Mona Holdings (Pty) Ltd** has built a good reputation and has successfully completed a number of projects.
- Industry experience - To ensure timely, cost-effective and tailor-made solutions, **Mona Holding (Pty) Ltd** works with reputable contractors with years of experience.
- A hands-on approach - **Mona Holdings (Pty) Ltd** recognizes that construction sector is a complex field. To ensure strong customer service and satisfaction, the company takes a hands-on approach and is involved every step of the way.
- Adhering to industry standards - The company adheres to industry standards and legislation and complies with all the requirements including those outlined in the Occupational Health and Safety Act (OHSA) 85 of 1993.



## COMPLETED PROJECTS

Client	Nature of Works	Contract Amount
1. Pearl Stem	Supply of sterile reinforced surgical disposable gowns	R680 200 - 00
2. City Of Johannesburg	Supply of Foam Mattress	R64 903 - 93
3. The provincial Head SAP	Disposal of medical waste boxes	R40 800 - 00
4. Ekurhuleni Municipality	<ul style="list-style-type: none"> <li>- Supply of Industrial Pressure washers</li> <li>- Supply of Stationery</li> <li>- Supply of Chairs</li> </ul>	R390 000 - 00 R190 000 - 00 R400 000 - 00
5. Joburg Water	Supply of Cleaning Equipments	R170 000 - 00
6. Multi National Group	Supply of Sterile reinforced surgical gowns	R350 000 - 00
7. Risimati Group	Renovation of Existing Warehouse	R150 882 - 00
8. Omunye Property Management	Rendering Quantity Surveying Services	R139 500 - 00
9. Multi National Group	<ul style="list-style-type: none"> <li>* Building work</li> <li>* Breaking down of existing walls</li> <li>* Painting</li> <li>* Plumbing Fixing</li> <li>* Carpentry</li> <li>* Tiling</li> <li>* Carpeting</li> <li>* Waterproofing</li> </ul>	R350 000 - 00
10. Khondela Trading CC	<ul style="list-style-type: none"> <li>* Civil works (Paving)</li> <li>* Building works (painting)</li> </ul>	R190 000 - 00 R26 000 - 00
11. Multi National Group	Civil works (Paving)	R150 000 - 00



## REFERENCES

Name of the Company	Contact Person	Contact Number
. City of Johannesburg	Tebogo Makhothi	011 407 6505 ebogomak@joburg.org.za
. The Provincial Head SAPS	Sergeant Chauke	011 547 9000 haukeg2@saps.gov.za
. Pearl Stem	Yashin Juggernath	084 524 3994 ashin@pearlstem.co.za
. Multi National Group	Mikateko Nkosi	072 9397 201 ikateko.nkosi@gmail.com
. Kondela Trading cc	Given Manave	079 922 4650 ivzamanave@gmail.com
. Risismati Group	Hlulani Chauke	083 476 5671 nfo@risimatigroup.co.za



# CONTACT US



079 136 2892



Noordwyk, Midrand, JHB (South Africa)



info@monaholdings.co.za



www.monaholdings.co.za